

IMPLEMENTATION OF ALIGNEMENT STUDY IN CROATIA- ISSUES IN CONDUCTING A RESEARCH PROJECT

Lovro BUCIĆ¹, Pavle JELIČIĆ¹, Maja ILIĆ¹, Denis JURAGA², Luka MATAK³, Pavle LONGIN⁴, Nataša JANEV HOLCER^{1,2}

Croatian Institute of Public Health, Zagreb¹; Faculty of Medicine of the University of Rijeka,²

General Hospital Zadar³, Institute of Public Health Zadar⁴

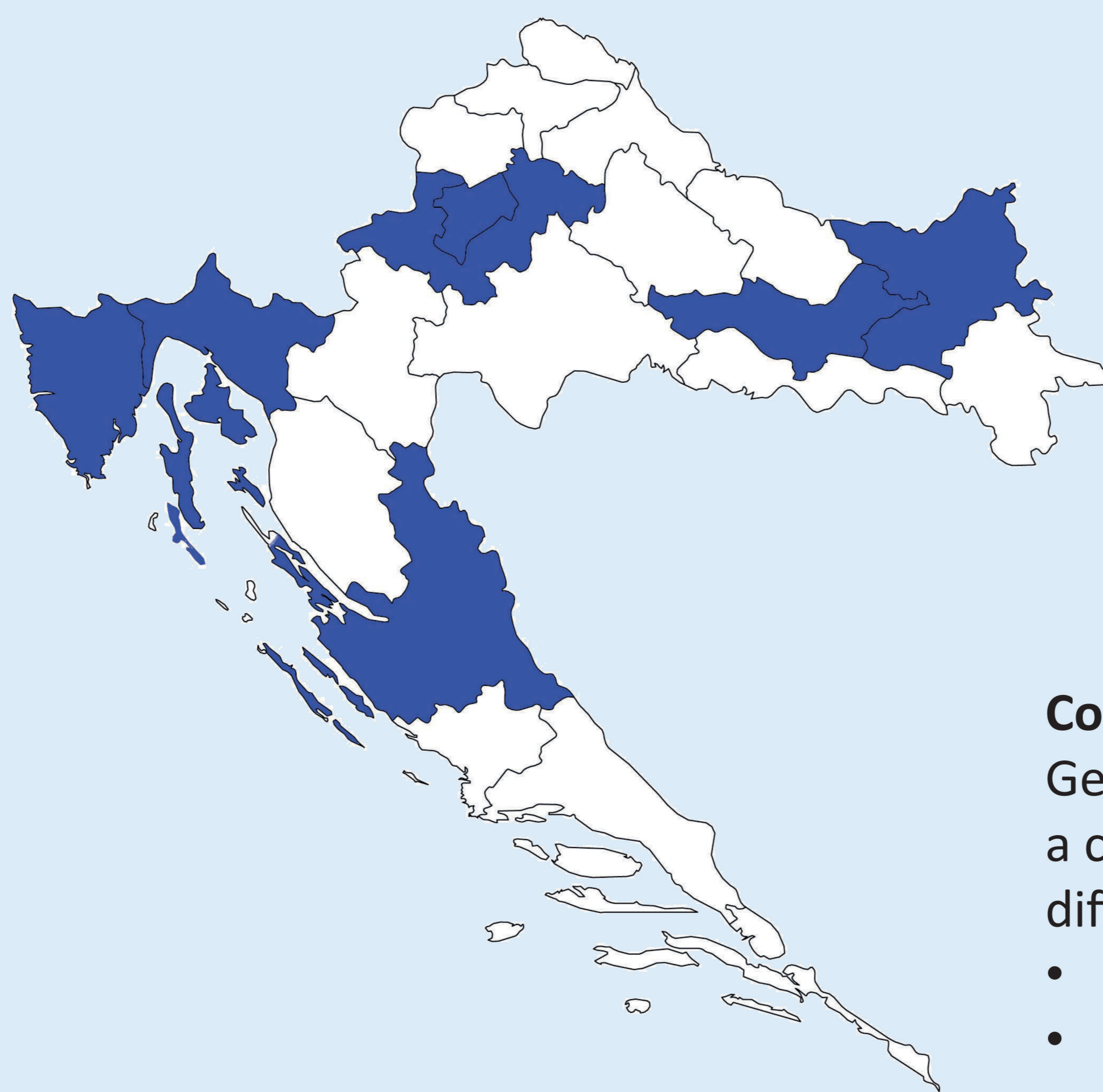


Croatia represents one of primary sampling units (PSU) of 300 participants which in this case targets one of the seven age groups (20-39y) set by the HBM4EU Protocol.



Research phases:

- Planning
- Preparatory
- Concretisation
- Starting
- Fieldwork



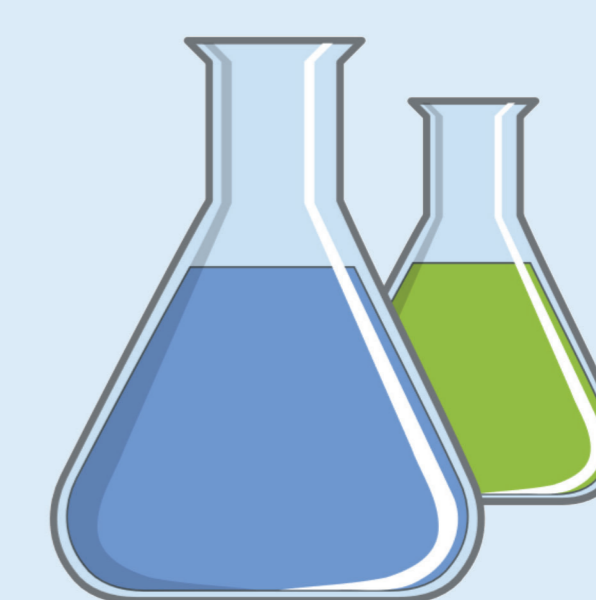
Concretisation:

Geographical areas were selected within a country. The survey is conducted in six different counties in Croatia:

- City of Zagreb/Zagreb
- Osječko baranjska
- Požeško slavonska
- Primorsko goranska
- Istarska
- Zadarska

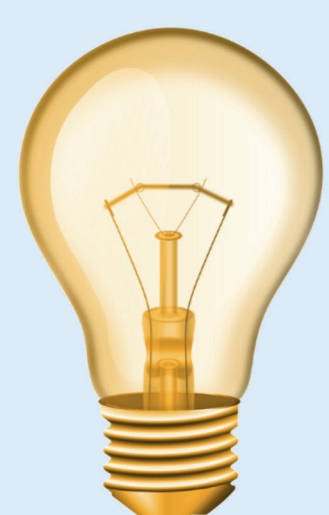
Three out of nine prioritized substances/ substance groups were identified as substances of interest:

Cd PAHs Bisphenols



Main issues:

One of the most commonly reported issue referred to fieldwork, especially the first contact with individual participants (invitation, clarification of inclusion and appointment fixing) and corresponding, response rates.



Possible solutions:

The survey will be followed up within participants by a questionnaire regarding health literacy, achieving awareness raising, better problem understanding and possible new directions in practices.



The selected substances determined the matrix to be collected, matrix volume and the sampling time-frames.